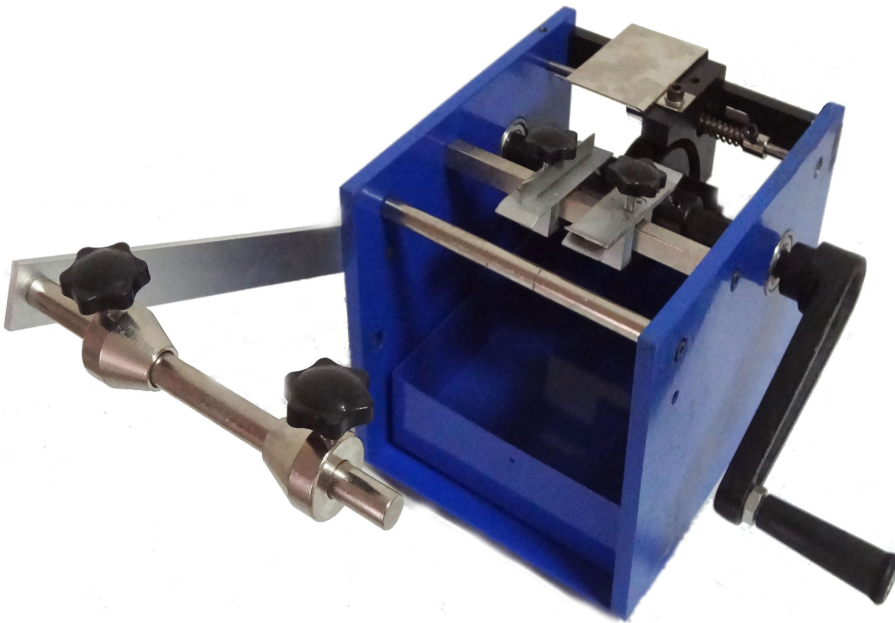
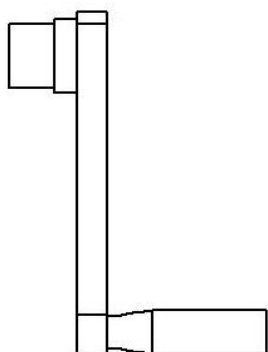


SM-301 Taped Radial Capacitor Lead Cutter**instruction manual**

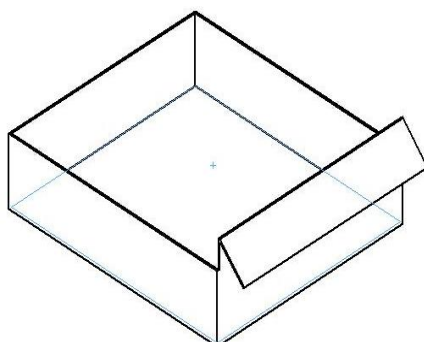
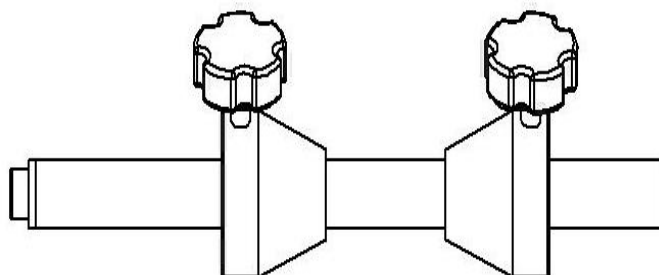
Please read this manual in detail before installation and use, and keep it for future reference.



packing list

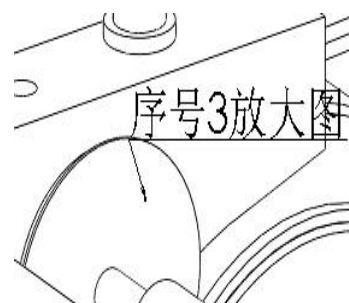
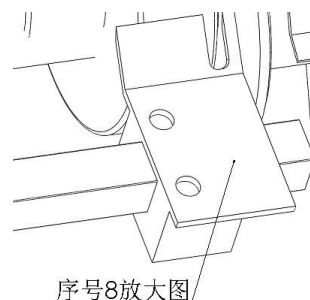
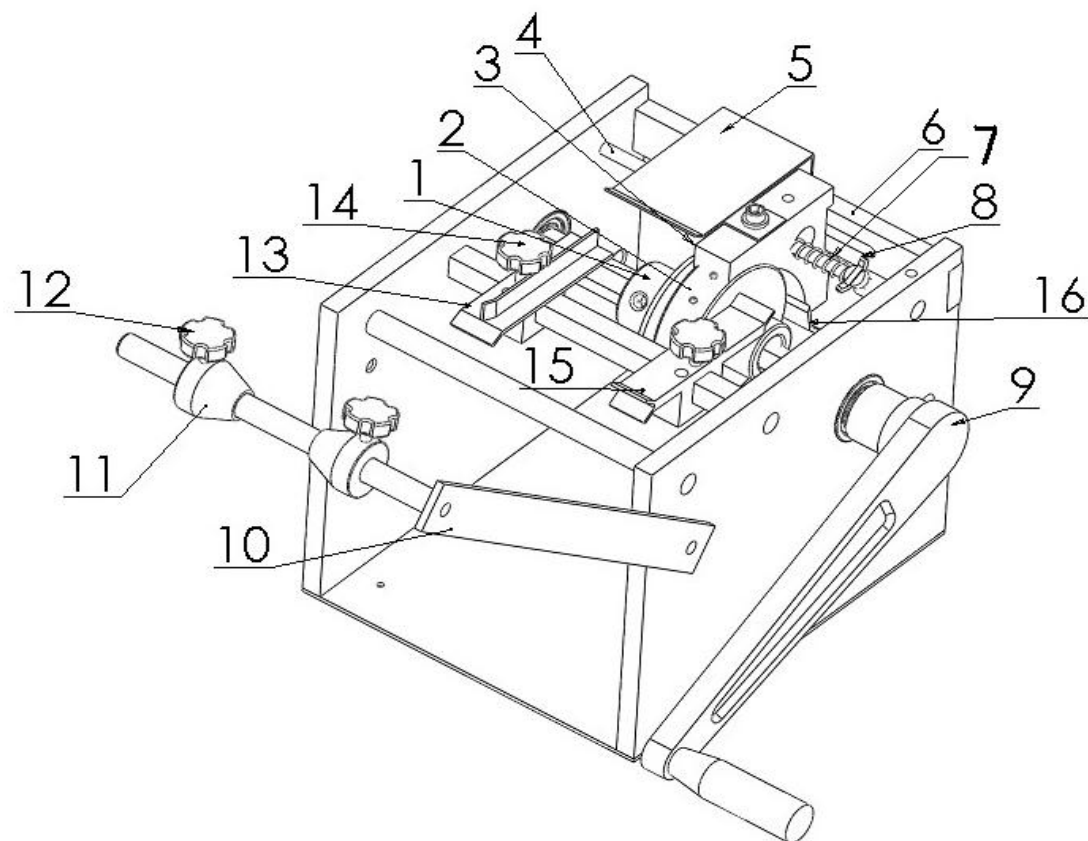


(1) (2)



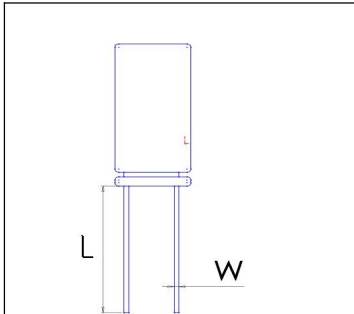
(3) (4) (5)

serial number	Name of annex	Unit (pieces/set)
1	hosts	1
2	Hexagonal Plate Handle	1
3	shake one's hand	1
4	hanging rod	1
5	support bar	1
6	synopsis (of a play or film)	1
7	cassette	1

product mix


serial number	Part Name	serial number	Part Name	serial number	Part Name
1	Knurled cutter	7	sprung	13	pallet clip
2	hanging wheel	8	Fixed set screws (socket head cap screws)	14	knob with a plum blossom
3	Cover Mount	9	shake one's hand	15	feed clamp
4	rotary cutter spindle	10	support bar	16	rewinders

5	bonnet	11	taper	17	
6	Cover holder retaining bar	12	knob with a plum blossom	18	

	L	3-20mm
	W	0.4-1.0mm
	Capability	50000Pcs/H

Product Parameters

- Product Name: Hand Crank Single Side Capacitor Cutting Machine SM-301
- Product Category: Single Side Ribbon Capacitors/Diodes/LEDs and other Electronic

Components

- Weight: 12 kg
- Machine size: L225xW190xH190 (MM)
- Cutting foot parameters.

Product Overview

- Suitable for cutting the legs of electronic components such as capacitors / diodes / LEDs braided on one side;
- Small size, high precision and adjustable cutting length;
- Low cost, high efficiency; production is not affected by external factors such as electricity.

Installation Instructions

- Please check the large-size packing list and read this manual carefully;
- Remove the machine. Place the machine on a flat table and secure it;
- Remove the crank. Use the distribution hexagonal wrench. Install the crank and turn the crank so that all the gears of the machine can operate normally;
- Install the support bar. Hanging bar (as shown in the structure drawing).

Operating Instructions

1. Loosen the screws on the cover (5) Fig. 1 fixing block with a wrench and remove the cover.

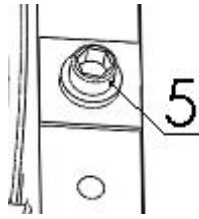


Figure 1

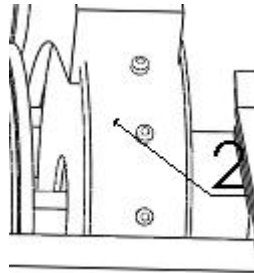
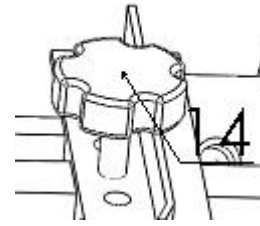


Figure 2



2. Take a piece of braided tape capacitor and hang the small holes in the braided tape on the tines of the hanging wheel (2) Fig. 2.
3. Loosen the Plum Knobs on the Feed Clamp (15) Fig. 3 and the Stock Clamp (14), then insert the Braiding Capacitor (Braided Tape) into the Feed Clamp Track so that each of the small holes aligns with the Round Tip on the Hanging Wheel, adjust the distance between the Feed Clamp and the Stock Clamp to be a little wider than the Braided Tape, but not wobbling too much from side to side, and then tighten the Plum Knobs.
4. Loosen (8) Fig. 4 the adjusting screw on the round cutter fixing shaft to loosen the spring and allow the round cutter to slide, then loosen (1) Fig. 5 the fastening screw on the knurling cutter and move the knurling cutter axially to the foot length required for the production; loosen (2) Fig. 4 the adjusting screw on the round cutter fixing shaft to tighten the spring so that the round cutter is tightly pressed to the inner side of the knurling cutter and tighten (3) Fig. 4 the adjusting screw on the knurling cutter fixing shaft to loosen the spring and allow the knurling cutter to slide, then tighten (4) Fig. 6 the adjusting screw on the round cutter fixing shaft.
5. Attach the cover.

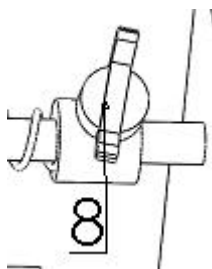


Figure 4

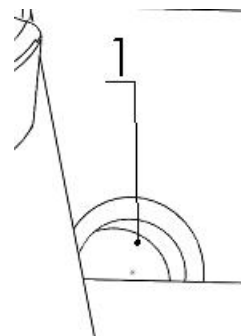


Figure 5

Caution.

1. When the machine is running, do not touch the rotating parts with your hands to prevent your hands and clothes from being rolled in;



Southern Machinery Sales and Service Co., Limited.

2. If the tape section is found to deviate from the tip of the loading teeth, stop the machine immediately to make adjustments.

Equipment Maintenance.

1. The surface of the hanging wheel, knurling cutter and round knife should not be stained with oil, while the surface of other transmission parts or parts can be added with appropriate anti-rust oil to prevent rust;
2. Check whether the screws of each part of the machine are loose, if loose, tighten them immediately;
3. After completing the work, the machine should be immediately cleaned of waste materials, so that the machine is always in good condition.